

---

# Welcome to the

## Doctoral School of Political Science, Public Policy and International Relations

Orientation session for PhD  
students 2016/2017





# ADMINISTRATION

SCHOOL DIRECTOR:

**XYMENA KUROWSKA**



Doctoral School Coordinators:

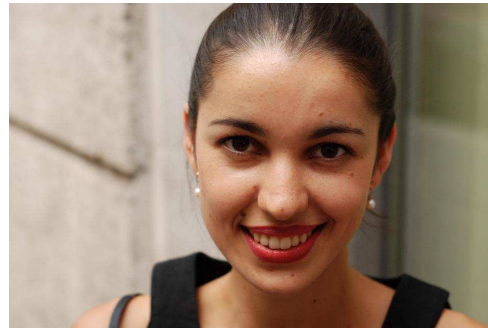
**Kriszta Zsukotynszky Peter Visnovitz**



# Departmental Coordinators



SPP: Zoltan Wagner



IR: Zlata Kharatinova

POLS: Eva Lafferthon

# Track Representatives



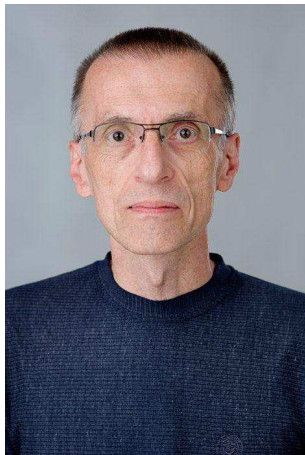
**CP:** Zsolt Enyedi



**IR:** Erin Jenne



**PE:** Cristina Corduneanu-Huci



**PT:** Nenad Dimitrijevic



**PP:** Nick Sitter

**CP:** Comparative Politics  
**PE:** Political Economy  
**PT:** Political Theory  
**IR:** International Relations  
**PP:** Public Policy

# Unit Heads



SPP PhD program:  
**Nick Sitter**



POLS department:  
**Carsten Schneider**



IR department:  
**Alexander Astrov**



## About YOU...

- 20 students from 16 countries

Bulgaria, France, Germany, Israel, Italy, Kosovo, Lebanon, Mongolia, Montenegro, Romania, Russian Federation, Serbia, Slovenia, Turkey, USA, Venezuela

- selected out of **283** applicants!

*Congratulations!*



## About the School...

- **5 tracks, 3 units, 1 school**
- 50+ Faculty
- 100+ Students
- **PhD in Political Science**
  - Joint core methods and prospectus course
  - Common rules
  - Uniform examination

# Who to turn to?

- **Administrative queries:**

School Coordinator (Peter, Kriszta)

School Director (Xymena)

- **Academic queries:**

Track Representatives

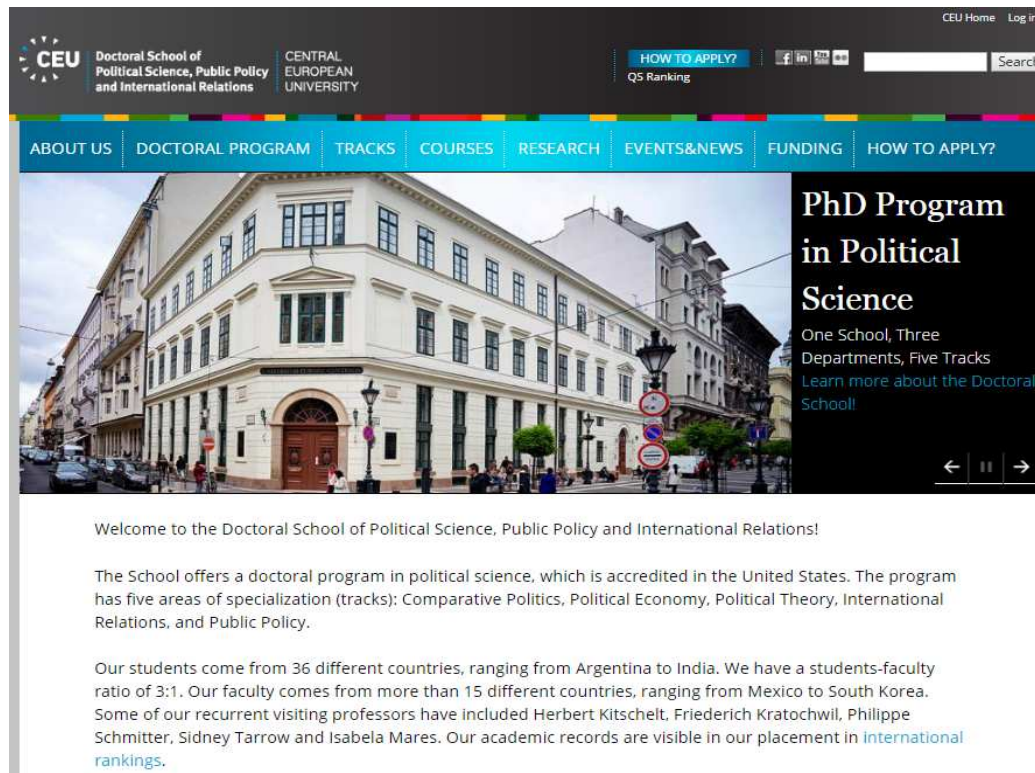
School Director

- **Course-related issues:**

Departmental coordinators

# Where to find us?

- Office: Vigyazo Ferenc street 2, 2nd floor, room 201
- Website: <http://pds.ceu.edu>



- Further info: [ds@ceu.edu](mailto:ds@ceu.edu)

# Where can you work? – PhD labs

- CEU offers PhD labs as student working space in Nador 11 and October 6 7.



# Where can you work? – PhD labs



# Curriculum: core courses

- All tracks have **3 core courses**, 4 credits each (12 credits total)
- Core courses need to be completed in the **first year**

<b>Comparative Politics</b>	The Political Economy of Regime Change	Political Institutions	Political Sociology and Economy
<b>Political Theory</b>	Democratic Theory	Political Institutions	Constituent Power
<b>Political Economy</b>	The Political Economy of Regime Change	Political Sociology and Economy	States, Classes, and Industries in the International Political Economy
<b>International Relations</b>	International Relations Theory	International Security	States, Classes, and Industries in the International Political Economy
<b>Public Policy</b>	European Integration and Global Governance	Public Administration	Public Policy: Theories, Traditions, Transitions

# Curriculum: mandatory courses

- Common courses for all tracks:
  - Methods and Research Design (4 credits)
  - Prospectus Seminar (2 credits)  
Mandatory for all students in the **first year**
- Departmental / Research seminar  
Organized by department, mandatory for all students

# Curriculum: elective courses

- **Advanced topics courses**
  - Must take at least 2 credits of advanced topics from your **own track** (can be done after the 1st year)
- **Courses from other tracks**
  - Must take at least 4 credits from a track other than yours / or methods course
- **Courses counting towards a minor**
  - You can take additional credits from other tracks. If you gain 8 credits overall from another track, you are entitled to get a minor from that track

# Complicating the curriculum

- **Methods instead of advanced topics**  
you may ask the permission of your track representative to replace the track-specific 'advanced topic' course with an optional methods course
- **Methods instead of other track course**  
you may go for a minor in Social Science Methodology in which case you may replace the 'other track' credits with optional methods courses
- **MA courses**  
Exceptionally you may ask the permission of the doctoral committee to take 4 credits of MA courses instead of the non-track courses

## 2 credits optional methods courses

Term	Professor	Title of course
Fall	RUDAS, Tamas	Graphical Modeling
Fall	RUDAS, Tamas	Survey Methodology
Winter	KUROWSKA, Xymena	Interpretive Research Design
Winter	SCHNEIDER, Carsten	Set-Theoretic Methods
Winter	LITTVAY, Levente	Advanced Methods: Structural Equation Modeling
Winter	SGIER, Lea	Discourse Analysis

- You can get a minor in Social Science Methodology if you take 8 credits of methods courses  
*(Mandatory methods courses don't count!)*

# Advancing to PhD candidacy

## Courses

- GPA: 3.33 average for all courses
- Minimum 18 credits completed  
(core+methods+prospectus seminar)

## Exams

- Prospectus submission  
**26 May, 2017**
- Comprehensive Examination  
**21-27 June, 2017**  
B+ or better grade for both Prospectus and Oral exam to pass

# Supervision

- **Temporary Supervisor**

Assigned for students at the beginning of the first year

- **Permanent Supervisor**

Selected by students until 17 February, 2017

- **Supervisory Panel**

Meets twice per year to supervise the students' research progress, to advise him/her and to write progress reports

- **For advice on course-choices:** you can rely on your temporary supervisor and on the track representative

- **In designing your prospectus:** you will be helped by your supervisor and the instructor of the Prospectus seminar (Gabor Toka)

# Research Groups and Centers

## Research Groups

- Political Economy Research Group (PERG)
- Political Behaviour Research Group (POLBERG)
- Equality and Social Justice Research Group (Actjust)
- Public Health Research Group (PHRG)
- Conflict and Security Research Group (CONSEC)
- International Relations Research Group (IRRG)
- Energy Policy Research Group (EPRG)

## Research Centers

- Center for Policy Studies (CPS)
- Center for Media, Data and Society (CMDs)
- Center for EU Enlargement Studies (CENS)
- Center for European Union Research (CEUR)
- Asia Research Initiative (ARI)

# External links

- European Consortium for Political Research (ECPR)
- Departmental and Research Groups' links
- Erasmus agreements (departments)
- Graduate Network Conferences with:
  - European University Institute, Florence
  - Humboldt University – the Berlin Graduate School of Social Sciences, Berlin
  - Sciences Po, Paris
  - London School of Economics and Political Science, London
  - Istituto Italiano di Scienze Umane, Florence
  - Universitat Pompeu Fabra, Barcelona

# Academic Calendar

- September 12-16: zero week, introductory classes
- September 16, 3 pm: Opening Ceremony
- **September 19: Fall semester starts**
- September 30: study plan submission
- December 9: Fall semester ends
- **January 9: Winter semester begins**
- February 17: choice of supervisor, submission of the title of research
- March 31: Winter semester ends
- April: Annual Doctoral Conference
- **May 26: prospectus submission**
- June 21-27: Comprehensive exams

# Psychological Counseling

- Manage time well
- Socialize
- Come to us
- Seek help: CEU psychological service, Berne Weiss ([weissb@ceu.edu](mailto:weissb@ceu.edu)) and Laszlo Biro ([birol@ceu.edu](mailto:birol@ceu.edu)),  
Psychologists

# Practical information

- **Readers**

No hard copies. Readings are available on CEU e-learning site  
<https://ceulearning.ceu.edu/>

- **Pigeon holes**

Vigyázó Ferenc street 2

- **Doctoral Regulations**

On the Doctoral School website

It is the regulating document for any question concerning the program and your studies

<http://pds.ceu.edu/regulations>

# Student requests

- Throughout your studies at CEU, you might face issues that require a decision or the approval by the Doctoral Committee (DC).
- Requests to the Doctoral Committee typically include the following issues:
  - changing one's student status (temporary withdrawal, re-enrollment, and extension)
  - changing one's supervisors
  - approval of certain courses or teaching experience
  - student employment, etc.
- To obtain a Doctoral Committee approval, you are asked to contact the DC in writing, by using a Request Form.
  - You can find the form on the website <http://pds.ceu.edu/student-issues>

# Student Union elections

- **Departmental elections** for the CEU Student Union are organized in every September
- All CEU programs can elect **2 student representatives** to the **Student Assembly** (Parliament)
- The Assembly will elect the **Student Union Board** (government) and the President in early October
- Elections for the Doctoral School will be organized in the next two weeks by the School Coordinator
  - You will receive information about the elections in email
- A student representative from the Doctoral School will become a member of the Doctoral Committee

Be a candidate and run for elections!

# What next?

- Attend introductory classes of the Zero week:

HOURS	MONDAY 12/09	TUESDAY 13/09	WEDNESDAY 14/09	THURSDAY 15/09	FRIDAY 16/09
10:30-11:00					
11:00-11:30	<b>PhD Orientation Welcome Presentation</b> by Xymena Kurowska, School Director <i>Gellner room</i>	Agnes Batory, Sara Svensson <b>Public Policy: Theories, Traditions, Transitions (PP)</b> VF 213	Carsten Schneider <b>The Political Economy of Regime Change (CP, PE)</b> VF 213		
11:30-12:00			Carsten Schneider <b>Set-Theoretic Methods (ALL)</b> VF 213		
12:00-12:30	<b>Welcome Reception for first-year students</b> <i>Gellner room</i>	Xymena Kurowska <b>Interpretive Research Design (ALL)</b> VF 213			
12:30-13:00					
13:00-13:30	Lunch break	Lunch break	Lunch break	Lunch break	Lunch break
13:30-14:00				Andres Moles <b>War (PT)</b> N13 223	
14:00-14:30	Michael Merlingen <b>Power and Resistance (IR, PE)</b> VF 213	Lea Sgier <b>Discourse Analysis (ALL)</b> VF 213	Nenad Dimitrijevic <b>Constituent Power (PT)</b> VF 213		
14:30-15:00					
15:00-15:30					<b>Doctoral School Year-Opening Social Event</b> 18:30 – 22:00 APROPO winebar
15:30-16:00		Michael Miller <b>Critical Approach to the Study of Nationalism (IR)</b> FT 608			
17:00-17:30			Tamas Rudas <b>Graphical Modeling (ALL)</b> VF 213		
17:30-18:00			Tamas Rudas <b>Survey Methodology (ALL)</b> VF 213		

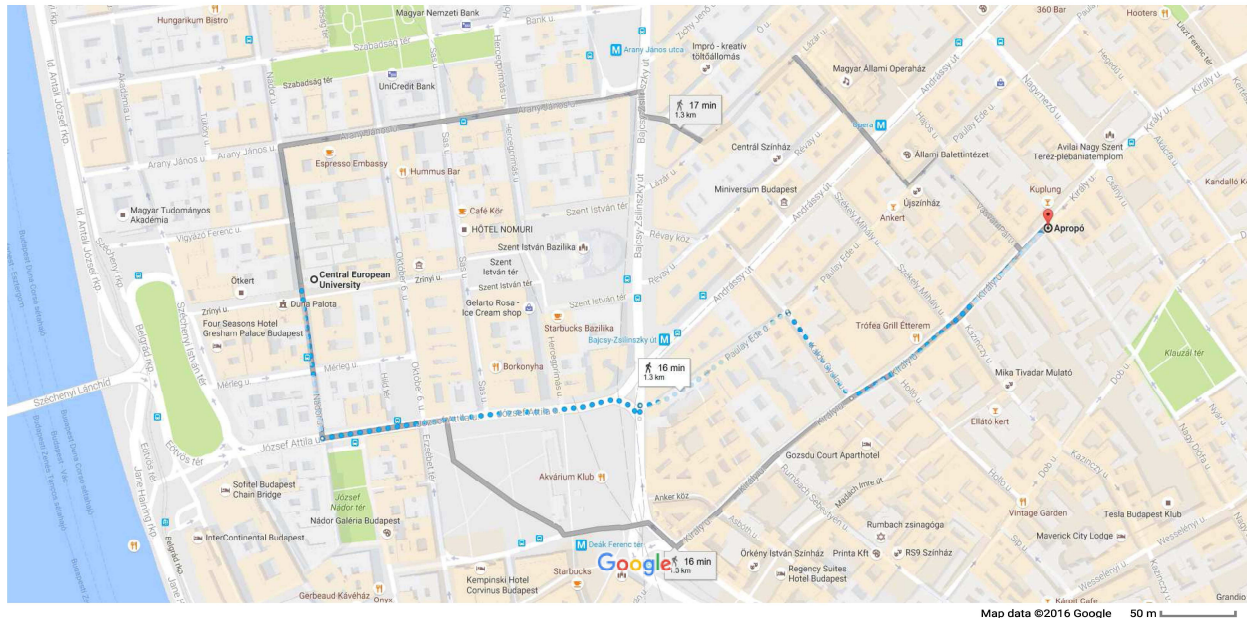
*\*When not indicated otherwise, zero week sessions are held in **Vigyázó Ferenc street 2, room 213. FT: Faculty Tower; N13: Nador u. 13. building***

# What next?

- At the end of Zero Week, the Doctoral School invites you to an annual year-opening social event to **APROPO winebar** on Friday from 6:30 pm!

Google Maps Central European University to Budapest, Apropó, Király u. 39, 1077

Walk 1.3 km, 16 min





**ANY QUESTIONS?**

**Thank you  
for your attention!**

---

# Welcome to the

## Doctoral School of Political Science, Public Policy and International Relations

Orientation session for PhD  
students 2016/2017





# ADMINISTRATION

SCHOOL DIRECTOR:

**XYMENA KUROWSKA**



Doctoral School Coordinators:

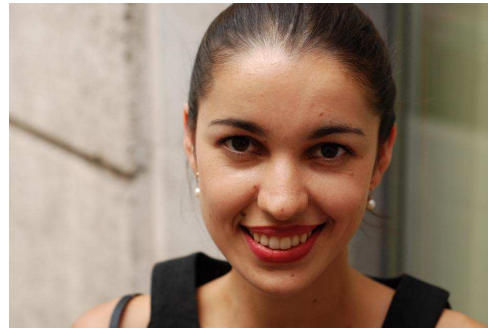
**Kriszta Zsukotynszky Peter Visnovitz**



# Departmental Coordinators



SPP: Zoltan Wagner



IR: Zlata Kharatinova

POLS: Eva Lafferthon

# Track Representatives



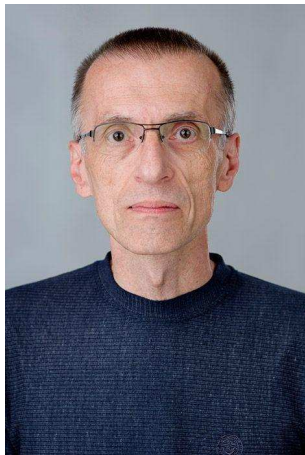
**CP:** Zsolt Enyedi



**IR:** Erin Jenne



**PE:** Cristina Corduneanu-Huci



**PT:** Nenad Dimitrijevic



**PP:** Nick Sitter

**CP:** Comparative Politics  
**PE:** Political Economy  
**PT:** Political Theory  
**IR:** International Relations  
**PP:** Public Policy

# Unit Heads



SPP PhD program:  
**Nick Sitter**



POLS department:  
**Carsten Schneider**



IR department:  
**Alexander Astrov**



## About YOU...

- 20 students from 16 countries  
Bulgaria, France, Germany, Israel, Italy, Kosovo, Lebanon, Mongolia, Montenegro, Romania, Russian Federation, Serbia, Slovenia, Turkey, USA, Venezuela
- selected out of **283** applicants!

*Congratulations!*



## About the School...

- **5 tracks, 3 units, 1 school**
- 50+ Faculty
- 100+ Students
- **PhD in Political Science**
  - Joint core methods and prospectus course
  - Common rules
  - Uniform examination

# Who to turn to?

- **Administrative queries:**

School Coordinator (Peter, Kriszta)

School Director (Xymena)

- **Academic queries:**

Track Representatives

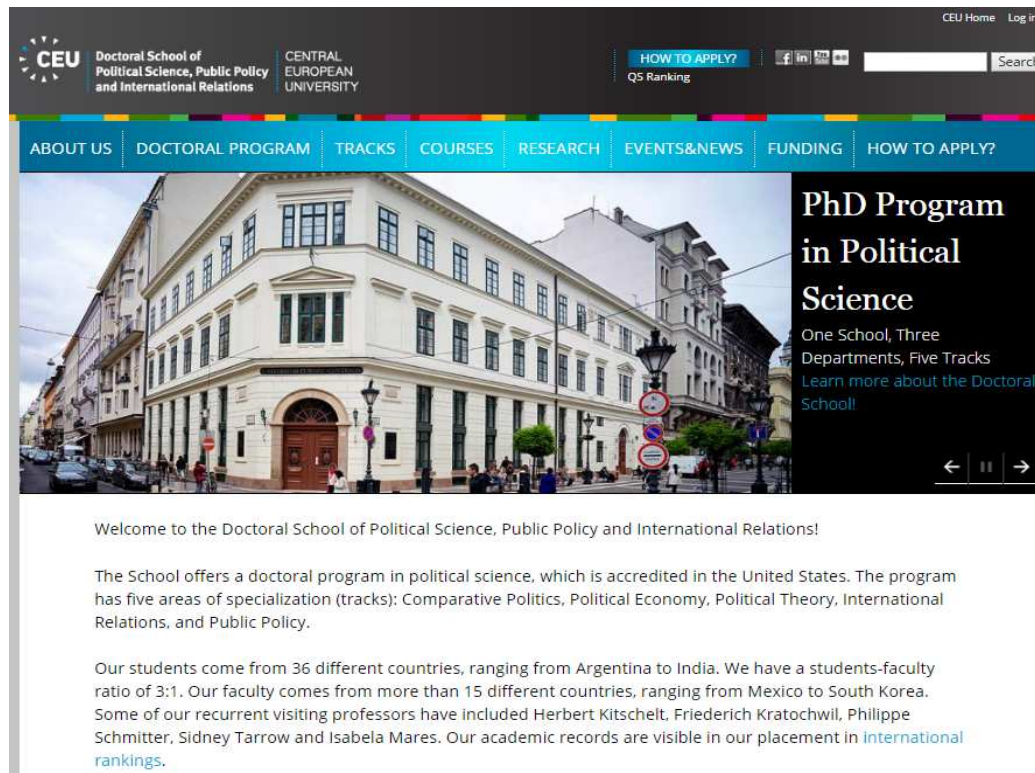
School Director

- **Course-related issues:**

Departmental coordinators

# Where to find us?

- Office: Vigyazo Ferenc street 2, 2nd floor, room 201
- Website: <http://pds.ceu.edu>



- Further info: [ds@ceu.edu](mailto:ds@ceu.edu)

# Where can you work? – PhD labs

- CEU offers PhD labs as student working space in Nador 11 and October 6 7.



# Where can you work? – PhD labs



# Curriculum: core courses

- All tracks have **3 core courses**, 4 credits each (12 credits total)
- Core courses need to be completed in the **first year**

<b>Comparative Politics</b>	The Political Economy of Regime Change	Political Institutions	Political Sociology and Economy
<b>Political Theory</b>	Democratic Theory	Political Institutions	Constituent Power
<b>Political Economy</b>	The Political Economy of Regime Change	Political Sociology and Economy	States, Classes, and Industries in the International Political Economy
<b>International Relations</b>	International Relations Theory	International Security	States, Classes, and Industries in the International Political Economy
<b>Public Policy</b>	European Integration and Global Governance	Public Administration	Public Policy: Theories, Traditions, Transitions

# Curriculum: mandatory courses

- Common courses for all tracks:
  - Methods and Research Design (4 credits)
  - Prospectus Seminar (2 credits)  
*Mandatory for all students in the **first year***
- Departmental / Research seminar  
*Organized by department, mandatory for all students*

# Curriculum: elective courses

- **Advanced topics courses**
  - Must take at least 2 credits of advanced topics from your **own track** (can be done after the 1st year)
- **Courses from other tracks**
  - Must take at least 4 credits from a track other than yours / or methods course
- **Courses counting towards a minor**
  - You can take additional credits from other tracks. If you gain 8 credits overall from another track, you are entitled to get a minor from that track

# Complicating the curriculum

- **Methods instead of advanced topics**  
you may ask the permission of your track representative to replace the track-specific 'advanced topic' course with an optional methods course
- **Methods instead of other track course**  
you may go for a minor in Social Science Methodology in which case you may replace the 'other track' credits with optional methods courses
- **MA courses**  
Exceptionally you may ask the permission of the doctoral committee to take 4 credits of MA courses instead of the non-track courses

## 2 credits optional methods courses

Term	Professor	Title of course
Fall	RUDAS, Tamas	Graphical Modeling
Fall	RUDAS, Tamas	Survey Methodology
Winter	KUROWSKA, Xymena	Interpretive Research Design
Winter	SCHNEIDER, Carsten	Set-Theoretic Methods
Winter	LITTVAY, Levente	Advanced Methods: Structural Equation Modeling
Winter	SGIER, Lea	Discourse Analysis

- You can get a minor in Social Science Methodology if you take 8 credits of methods courses  
*(Mandatory methods courses don't count!)*

# Advancing to PhD candidacy

## Courses

- GPA: 3.33 average for all courses
- Minimum 18 credits completed  
(core+methods+prospectus seminar)

## Exams

- Prospectus submission  
**26 May, 2017**
- Comprehensive Examination  
**21-27 June, 2017**  
B+ or better grade for both Prospectus and Oral exam to pass

# Supervision

- **Temporary Supervisor**

Assigned for students at the beginning of the first year

- **Permanent Supervisor**

Selected by students until 17 February, 2017

- **Supervisory Panel**

Meets twice per year to supervise the students' research progress, to advise him/her and to write progress reports

- **For advice on course-choices:** you can rely on your temporary supervisor and on the track representative

- **In designing your prospectus:** you will be helped by your supervisor and the instructor of the Prospectus seminar (Gabor Toka)

# Research Groups and Centers

## Research Groups

- Political Economy Research Group (PERG)
- Political Behaviour Research Group (POLBERG)
- Equality and Social Justice Research Group (Actjust)
- Public Health Research Group (PHRG)
- Conflict and Security Research Group (CONSEC)
- International Relations Research Group (IRRG)
- Energy Policy Research Group (EPRG)

## Research Centers

- Center for Policy Studies (CPS)
- Center for Media, Data and Society (CMDs)
- Center for EU Enlargement Studies (CENS)
- Center for European Union Research (CEUR)
- Asia Research Initiative (ARI)

# External links

- European Consortium for Political Research (ECPR)
- Departmental and Research Groups' links
- Erasmus agreements (departments)
- Graduate Network Conferences with:
  - European University Institute, Florence
  - Humboldt University – the Berlin Graduate School of Social Sciences, Berlin
  - Sciences Po, Paris
  - London School of Economics and Political Science, London
  - Istituto Italiano di Scienze Umane, Florence
  - Universitat Pompeu Fabra, Barcelona

# Academic Calendar

- September 12-16: zero week, introductory classes
- September 16, 3 pm: Opening Ceremony
- **September 19: Fall semester starts**
- September 30: study plan submission
- December 9: Fall semester ends
- **January 9: Winter semester begins**
- February 17: choice of supervisor, submission of the title of research
- March 31: Winter semester ends
- April: Annual Doctoral Conference
- **May 26: prospectus submission**
- June 21-27: Comprehensive exams

# Psychological Counseling

- Manage time well
- Socialize
- Come to us
- Seek help: CEU psychological service, Berne Weiss ([weissb@ceu.edu](mailto:weissb@ceu.edu)) and Laszlo Biro ([birol@ceu.edu](mailto:birol@ceu.edu)),  
Psychologists

# Practical information

- **Readers**

No hard copies. Readings are available on CEU e-learning site  
<https://ceulearning.ceu.edu/>

- **Pigeon holes**

Vigyázó Ferenc street 2

- **Doctoral Regulations**

On the Doctoral School website

It is the regulating document for any question concerning the program and your studies

<http://pds.ceu.edu/regulations>

# Student requests

- Throughout your studies at CEU, you might face issues that require a decision or the approval by the Doctoral Committee (DC).
- Requests to the Doctoral Committee typically include the following issues:
  - changing one's student status (temporary withdrawal, re-enrollment, and extension)
  - changing one's supervisors
  - approval of certain courses or teaching experience
  - student employment, etc.
- To obtain a Doctoral Committee approval, you are asked to contact the DC in writing, by using a Request Form.
  - You can find the form on the website <http://pds.ceu.edu/student-issues>

# Student Union elections

- **Departmental elections** for the CEU Student Union are organized in every September
- All CEU programs can elect **2 student representatives** to the **Student Assembly** (Parliament)
- The Assembly will elect the **Student Union Board** (government) and the President in early October
- Elections for the Doctoral School will be organized in the next two weeks by the School Coordinator
  - You will receive information about the elections in email
- A student representative from the Doctoral School will become a member of the Doctoral Committee

Be a candidate and run for elections!

# What next?

- Attend introductory classes of the Zero week:

HOURS	MONDAY 12/09	TUESDAY 13/09	WEDNESDAY 14/09	THURSDAY 15/09	FRIDAY 16/09
10:30-11:00					
11:00-11:30	<b>PhD Orientation Welcome Presentation</b> by Xymena Kurowska, School Director <i>Gellner room</i>	Agnes Batory, Sara Svensson <b>Public Policy: Theories, Traditions, Transitions (PP)</b> VF 213	Carsten Schneider <b>The Political Economy of Regime Change (CP, PE)</b> VF 213		
11:30-12:00			Carsten Schneider <b>Set-Theoretic Methods (ALL)</b> VF 213		
12:00-12:30	<b>Welcome Reception for first-year students</b> <i>Gellner room</i>	Xymena Kurowska <b>Interpretive Research Design (ALL)</b> VF 213			
12:30-13:00					
13:00-13:30	Lunch break	Lunch break	Lunch break	Lunch break	Lunch break
13:30-14:00				Andres Moles <b>War (PT)</b> N13 223	
14:00-14:30	Michael Merlingen <b>Power and Resistance (IR, PE)</b> VF 213	Lea Sgier <b>Discourse Analysis (ALL)</b> VF 213	Nenad Dimitrijevic <b>Constituent Power (PT)</b> VF 213		
14:30-15:00					
15:00-15:30					<b>Doctoral School Year-Opening Social Event</b> 18:30 – 22:00 APROPO winebar
15:30-16:00		Michael Miller <b>Critical Approach to the Study of Nationalism (IR)</b> FT 608			
17:00-17:30			Tamas Rudas <b>Graphical Modeling (ALL)</b> VF 213		
17:30-18:00			Tamas Rudas <b>Survey Methodology (ALL)</b> VF 213		

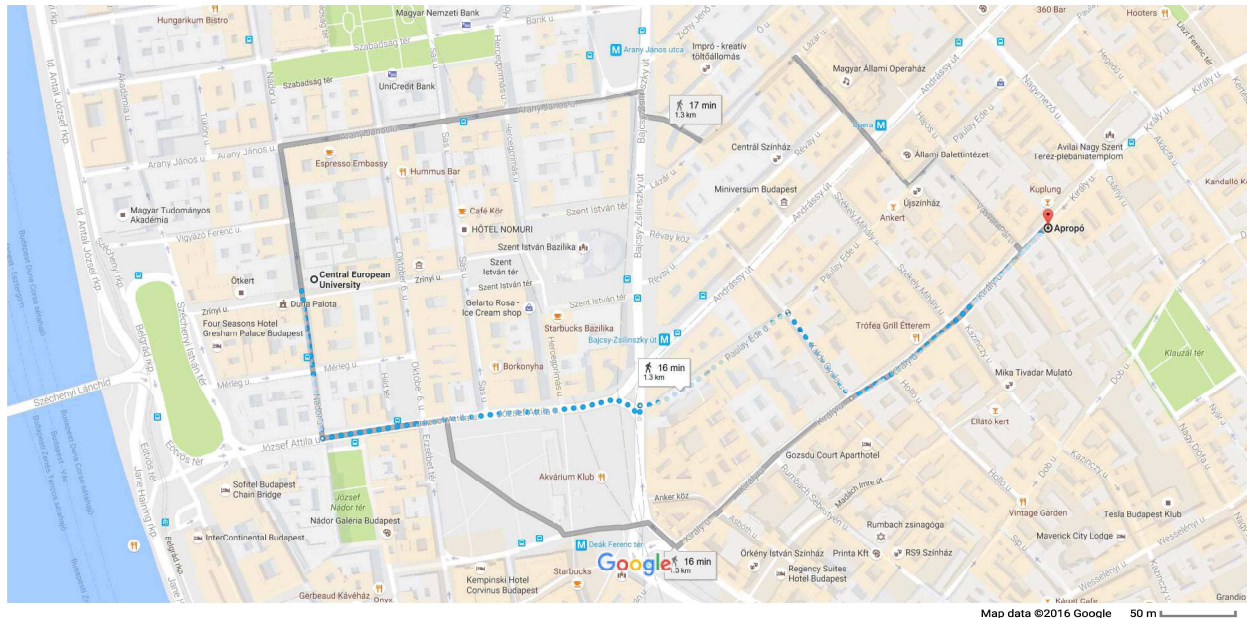
*\*When not indicated otherwise, zero week sessions are held in **Vigyázó Ferenc street 2, room 213. FT: Faculty Tower; N13: Nador u. 13. building***

# What next?

- At the end of Zero Week, the Doctoral School invites you to an annual year-opening social event to **APROPO winebar** on Friday from 6:30 pm!

Google Maps Central European University to Budapest, Apropó, Király u. 39, 1077

Walk 1.3 km, 16 min





**ANY QUESTIONS?**

**Thank you  
for your attention!**